



Series 360/460

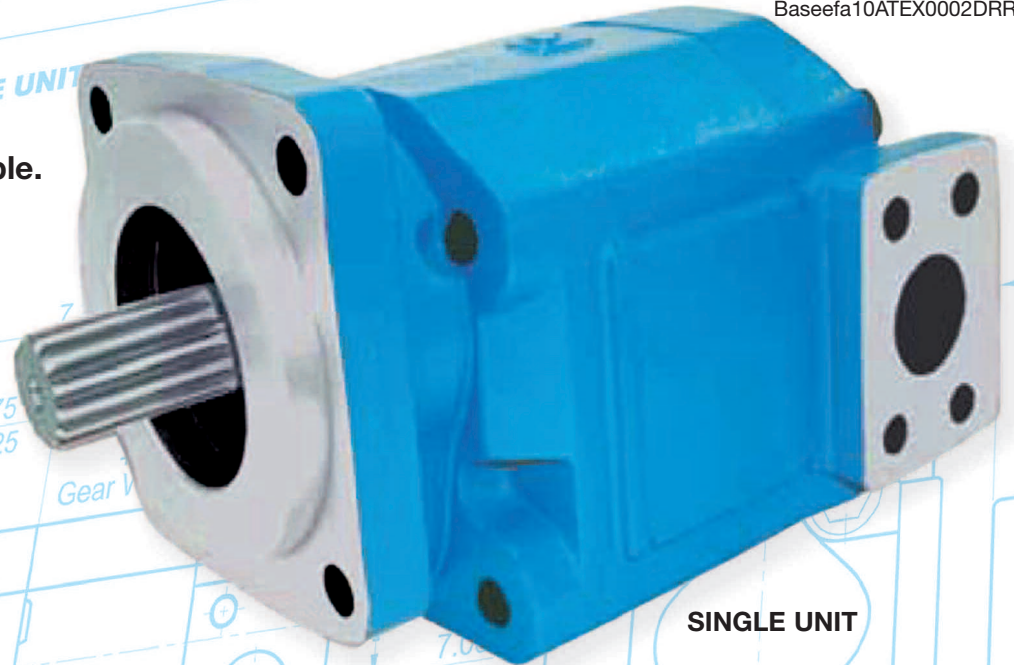
DIMENSIONAL DATA

Bushing Pumps

360/460 SERIES


 ATEX assessed 
 Baseefa10ATEX0002DRR

- Single or multiple units available.
- Piggyback options available.
- Displacement 30 cc/rev to 148 cc/rev.
- Gear widths 1/2" to 2.1/2".
- Minimum operating speed 600 rpm.
- Maximum operating speed 2400 rpm.
- Maximum continuous operating pressure 4500 psi (310 bar).
- Drive shaft PL factor: up to 13500.
- Cast iron construction.
- Compatible with mineral oil, water glycol, invert emulsion and fire resistant fluid.



Mounting Flange Options:

SAE 'B' 2 bolt, SAE 'B' 4 bolt, SAE 'C' 2 bolt, SAE 'C' 4 bolt, SAE 'D' 4 bolt.

Drive Shaft Options:

SAE 'C' 14 tooth, SAE 'BB' 15 tooth, SAE 'C' keyed, SAE 'CC' 17 tooth.

Various Porting Options:

BSP, SAE, NPT, JIC (ODT).

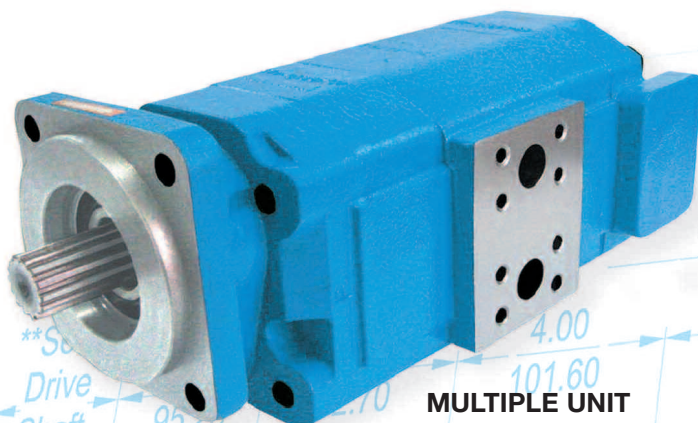
Recommended Operating Conditions:

Fluid viscosity, normal operating conditions 16 to 220 cst.

Fluid temperature should not exceed 65 deg. C.

Fluid cleanliness, 10 micron filter with Beta 200 rating is recommended.

Inlet pressure; for best operation with mineral oil, pressure should not exceed minus 0.237 bar (7 in HG).



Performance and Dimensions overleaf

Please discuss your application with our sales engineers.

Series 360/460 Pumps

PERFORMANCE DATA

Pump Performance

Output- L/min/igpm – Input-Kw/Horsepower ▶				Input Speed – rpm					
				1000		1500		1800	
Gear widths – code	Gear widths – inches	Displacement – cc/rev	Maximum continuous working pressure – bar/psi	Output	Input	Output	Input	Output	Input
05	1/2	30	241/3500	26 / 5.7	13 / 18	41 / 9.0	15 / 20	49 / 10.8	18 / 24
07	3/4	44	241/3500	33 / 7.3	19 / 26	67 / 12.6	29 / 39	70 / 15.4	35 / 47
10	1	59	241/3500	49 / 10.8	26 / 35	79 / 17.4	39 / 52	97 / 21.4	47 / 63
12	1.1/4	74	241/3500	63 / 13.9	33 / 44	101 / 22.2	49 / 66	123 / 27.1	59 / 79
15	1.1/2	89	241/3500	78 / 17.2	39 / 53	123 / 27.1	59 / 79	149 / 32.8	70 / 94
17	1.3/4	103	241/3500	92 / 20.2	45 / 61	145 / 31.9	68 / 92	176 / 38.8	82 / 110
20	2	118	241/3500	107 / 23.6	52 / 70	167 / 36.8	78 / 105	202 / 44.5	94 / 126
22	2.1/4	133	224/3250	121 / 29.3	55 / 73	188 / 41.4	82 / 110	228 / 50.2	98 / 131
25	2.1/2	148	207/3000	136 / 30.0	56 / 75	211 / 46.5	84 / 112	255 / 56.2	101 / 135

● Flows quoted are at test pressures equivalent to maximum continuous working pressures, using 32cSt oil at 65 deg C.

● When using water based fluids, the maximum continuous working pressure is reduced, please consult sales department.

● Performance data is derived from tests conducted to simulate working conditions. Continuous operation at maximum performance may compromise unit life.

If in doubt when specifying, please consult our sales department.

460 Series of pumps are available in the following gear widths:

07 – 3/4 – 44 cc

10 – 1 – 59 cc

12 – 1.1/4 – 74 cc

15 – 1.1/2 – 89 cc

for maximum operating pressures of 310 bar/4500 psi.

They are available with same shaft, mounting and porting configurations as the 360.

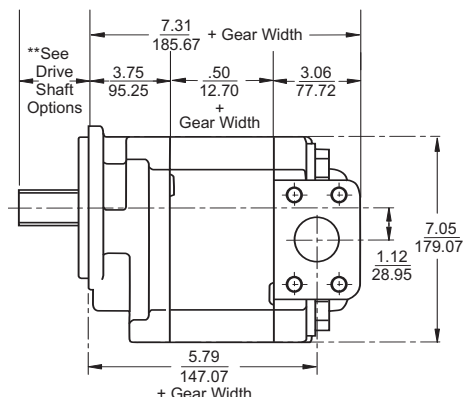
Please consult our sales department.

WEIGHTS (approximate)

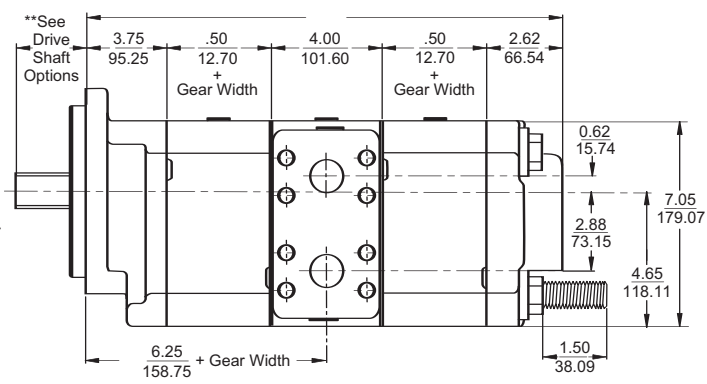
Gear widths (ins)	1/2	3/4	1	1.1/4	1.1/2	1.3/4	2	2.1/4	2.1/2
Single unit (kg)	21	23	25	27	29	31	33	35	37

For multiple unit weights, please consult our sales department.

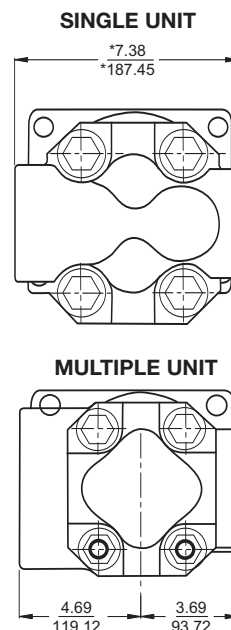
DIMENSIONS



SINGLE UNIT



MULTIPLE UNIT



*Standard port arrangement, dimension will change with type of port.

**Dimensional information for mounting flange and shaft options are shown on the attached Data Sheet FS100.

HYDRA-PERM-CO LTD

HYDRAULIC ENGINEERS

Unit 20 Silver Court ■ Intercity Way ■ Bramley ■ Leeds ■ West Yorkshire ■ LS13 4LY ■ UK

Tel: +44 (0) 1132 361367 ■ Fax: +44 (0) 113 239 4207 ■ e-mail: info@hydra-perm.co.uk ■ website: www.hydra-perm.co.uk