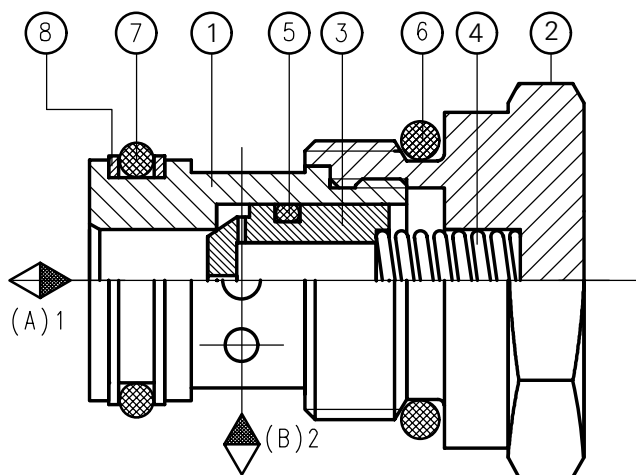
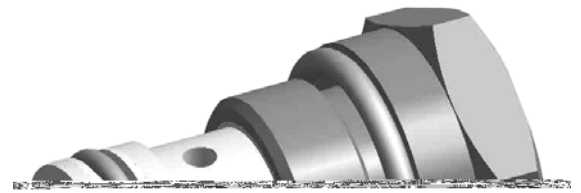


APPLICATION

The valves type UDSD 6 are pressure and viscosity dependent throttle/check valves. They are designed to control fluid flow rate in one direction and allow free flow in the opposite direction.



DESCRIPTION OF OPERATION

In throttling direction oil flows from connection A (B) to connection B (A) via a hole in poppet (3). Throttling depends on the hole diameter in the poppet (3). In the opposite direction oil flow acts on the surface face of the poppet (3).

The poppet (3) is lifted from its seat and fluid flows freely through the valve.

TECHNICAL DATE

Working fluid	Mineral oil
Nominal fluid viscosity	37 mm ² /s at temperature 328 K (55 °C)
Viscosity range	2,8 up to 380 mm ² /s
Optimum working temperature range	313 up to 328 K (40 up to 55 °C)
Fluid temperature range	243 up to 343 K (-30 up to 70 °C)
Required fluid filtration	16 μm
Recommended fluid filtration	10 μm
Max working pressure	29 MPa
Cracking pressure	from 0,1 to 0,5 MPa
Weight	0,1 kg

PONAR WADOWICE S.A.
ul. Wojska Polskiego 29
34-100 Wadowice
tel. 033/ 823 39 43, 823 30 41
fax 033/ 873 48 80

e-m

